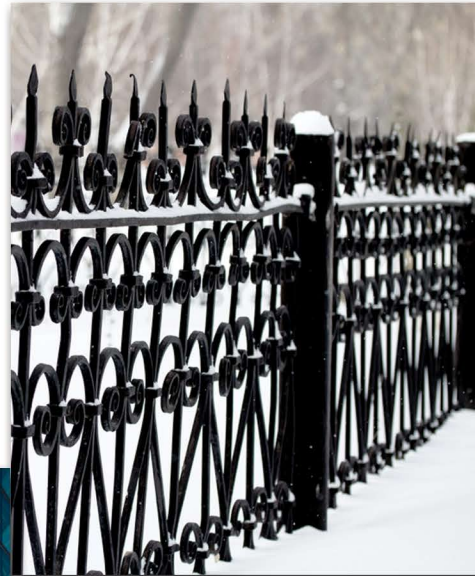


 **TCI**  
POWDER COATINGS

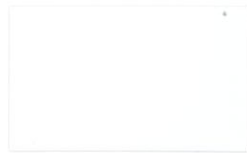


**TruDurance**  
Architectural Powder Coatings

An **RPM** Company



10810-91787  
11710-92256R  
Sky White II



10710-91840A  
11710-91898R  
Window White



10510-91602A  
Satin White



10410-91839A  
Bright Matte White



10310-92050  
Polar White



10510-91922A  
11510-92253R  
New Bone White



10510-11712  
RAL 1013



10410-12088A  
11510-12203R  
Matte Cream



10510-12082A  
Sandstone



10610-12080A  
11610-12102R  
Beige



10310-51228  
Interstate Blue



10310-61545  
Teal



10420-61537  
Patina Green



10310-61074  
RAL 6005



10410-61542  
11410-61627R  
Hartford Green



10310-71748  
RAL 7006



10510-81101A  
Toffee



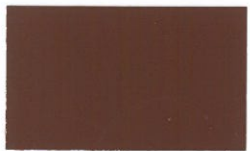
10610-81102A  
Chestnut Brown



10410-81104A  
11310-81125R  
Window Bronze



10310-80795A  
New Dark Bronze



10310-30250A  
11410-30266R  
Redwood



10310-30353  
Burgundy



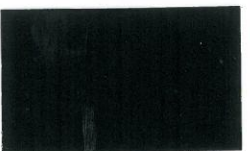
10310-71747  
RAL 7038



10310-71751  
RAL 7045



10410-72503  
11410-72756R  
Slate Gray



10940-92248  
11710-92255R  
Gloss Black



10620-92153A  
11610-92254R  
Satin Black



10410-92435  
11410-92252R  
Matte Black



10910-01609A  
11910-01573R  
Gloss Clear

\*11000 series product codes meet 2605 specifications

\*\*Product codes ending in R are available in 25 pound boxes.

\*\*\*Some colors cannot be formulated to meet AAMA specs due to pigment limitations.

### Product Coding Notes for all TruDurance Metallics

10801/1000 = 10000 Series Metallic  
\*CLEARCOAT Required

108010/1000 = 10000 Series Metallic  
\*NO CLEARCOAT Required

# Specification Comparison Chart

Test Parameter	9000 Series AAMA 2603-13	10000 Series AAMA 2604-13	11000 Series AAMA 2605-13
	1-Year	5-Year	10-Year
Pretreatment	Multi stage cleaning and pretreatment system	Multi stage cleaning and pretreatment system, chrome and non-chrome	Multi stage cleaning and pretreatment system, chrome and non-chrome
Pretreatment Coating Weight	None specified	Chrome 30mg/ft <sup>2</sup>	Chrome 40mg/ft <sup>2</sup>
Film Thickness	2-4 mils	2-4 mils	2-4 mils
Repairability	See film touch up and repair procedures		
Sealant Compatibility	Meet performance requirements of AAMA 800 sealant specification		
Hardness	H-2H	H-2H	H
	Values represent TCI product characteristics		
Dry Adhesion	No loss of adhesion		
Wet Adhesion	No loss of adhesion		
Boiling Water Adhesion	No loss of adhesion		
Impact Resistance	No film removal on min. 3 mm deformation		
Abrasion Resistance	N/A	Abrasion coefficient $\geq$ 20 min	Abrasion coefficient $\geq$ 40 min
Muratic Acid	No change after 15 minute spot test		
Mortar Resistance	No adhesion loss or appearance change after 24 hour pat test		
Nitric Acid Resistance	N/A	5 DE max color change after 30 min. vapor exposure	
Detergent	No change or adhesion loss after 72 hour immersion		
Window Cleaner	N/A	No change or adhesion loss after 24 hour spot test	
Humidity Resistance	1,500 hours: no more than "few" blisters size 8, figure #4 ASTM D 714	3,000 hours: no more than "few" blisters size 8, figure #4 ASTM D 714	4,000 hours: no more than "few" blisters size 8, figure #4 ASTM D 714
Salt Spray Resistance	1,500 hours of salt solution: minimum rating of 7 on scribe or cut edges: minimum blister rating of 8 in the field (ASTM D 1654) ASTM D 714	3,000 hours of salt solution: minimum rating of 7 on scribe or cut edges: minimum blister rating of 8 in the field (ASTM D 1654)	2000 hours of cyclic corrosion per ASTM G85, Annex 5: minimum rating of 7 on scribe or cut edges: Minimum blister rating of 8 in the field (ASTM D 1654)
Outdoor Resistance	1 year south Florida: maintain film integrity; no adhesion loss slight chalking or fading	5 years south Florida: maintain film integrity; 5 DE (Hunter) maximum color change; chalking (ASTM D 4214) $\leq$ 8; gloss retention $\geq$ 30%; erosion resistance less than 10% film loss	10 years south Florida: maintain film integrity; 5 DE (Hunter) maximum color change; chalking (ASTM D 4214) $\leq$ 8; gloss retention $\geq$ 50%; erosion resistance less than 10% film loss

- Exclusive line of TCI **TruTouch** aerosol touch-up products formulated to match in both color and durability are available for AAMA 2603, 2604, and 2605 applications.

# 9000 Series

## AAMA 2603 Specification

TCI 9000 Series Polyester Systems have the broadest formulating range in color and gloss and many will meet or exceed AAMA 2603 performance requirements. Products in this series have a gloss range of 20-90%+ and meet many decorative and functional requirements for chemical resistance, physical properties, color, gloss, and weatherability. High chroma colors are also available. Typical uses include aluminum extrusions, playground equipment, agricultural equipment, and machinery.

# 10000 Series

## AAMA 2604 Specification

The TCI 10000 Series Superior Exterior Performance Polyester Systems are formulated to meet the requirements of the AAMA 2604 specification. Products in this series have a 60° gloss range of 30-90%+ and are available in a wide selection of colors. Proper chrome or non-chrome pretreatment is critical for product performance. A chrome conversion coating must be applied at 30 mg/ft<sup>2</sup> minimum. The non-chrome must be applied per supplier's specification. A TCI technical representative must audit each application system to insure products will meet the 2604 specification.

# TruTouch

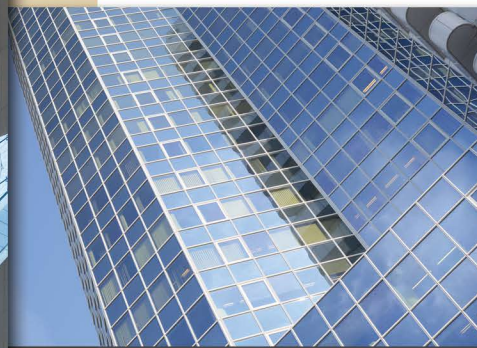
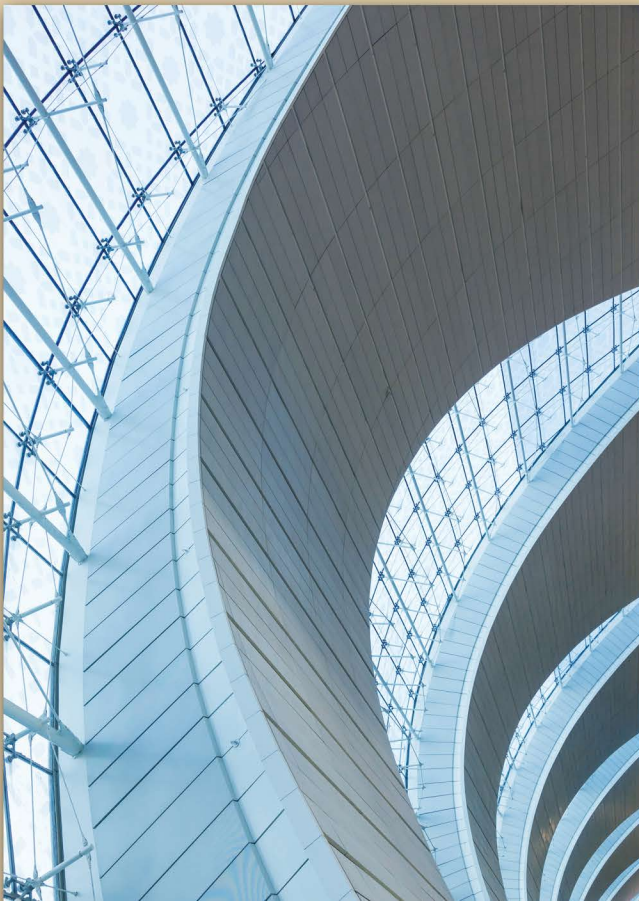
Touch-Up Paint

**Need an easy way to touch up uncoated areas or repairs? No worries, we have you covered!** TCI recognizes that touch-up coatings used for AAMA applications need to perform as well as the actual TruDurance powder coatings being applied. Therefore, after years of development, TCI is proud to launch TruTouch Aerosol Touch-Up Paints, which is formulated to meet AAMA 2603, 2604, and 2605 color and gloss requirements.

# 11000 Series

## AAMA 2605 Specification

The TCI 11000 Series Highest Exterior Performance Organic Systems are formulated to meet the requirements of the AAMA 2605 specification. Products in this series have a 60° gloss range of 35-80%+ and are available in many colors. Proper amorphous chromium phosphate or amorphous chromate pretreatment is critical for product performance. The chrome coating weight must be applied at 40 mg/ft<sup>2</sup> minimum. A TCI technical representative must audit each application system to insure products will meet the 2605 specification.



# TruDurance

TCI Certified Applicator

TCI field technicians are trained to audit all aspects of the powder coating operation to determine the customer's ability to achieve AAMA requirements. TCI runs a variety of tests that evaluate the performance of our powder coatings in the customer's process and continues with annual renewal audits to ensure the process parameters have not changed without notification. For certified applicators, warranties are available for 2603, 2604, and 2605 applications.



TCI Powder Coatings  
PO Box 13 • 734 Dixon Drive  
Ellaville, GA, USA 31806  
Phone: 800-533-9067  
Fax: 800-265-0404  
[www.tcipowder.com](http://www.tcipowder.com)