



# TCI Stock Color Card

# TCI Colors in Stock and Ready to Order

TCI Powder Coatings stocks over 300 products available in a variety of colors, textures and effects ready to ship to you on a moment's notice. Along with the products in this color chart, other stock color options include TCI's TruDurance™ Architectural Powder Coatings which meet AAMA 2603, 2604 and 2605 specifications as well as our super durable RAL colors.

TCI has developed a number of product lines to offer you a complete range of powder coating options. Designed to give you the durability and brilliance you expect, our product portfolio is suitable for those markets that require a protective, yet beautiful finish.

A few of TCI's product lines include TruBond™ Bonded Metallic Coatings, Trullusion™ Special Effects Coatings, TruZinc™ Primer Coatings, and TruDurance™ Architectural Powder Coatings.

## Selecting the Right Product

Interior Applications - 1000, 2000, 3000, 4000, 6000, 7000

Exterior Applications - 2000, 3000, 4000, 5000, 8000, 9000, 10000, 11000

Property	1000	2000	3000	4000	5000	6000	7000	8000	9000	10000	11000
Hardness	E	E	G	VG-E	VG	VG	E	G	VG	VG	VG
Flexibility	E	P	G	VG	E	E	E	E	E	E	E
Overbake Stability	P	E	E	VG	E	VG	P	G	E	VG	VG
Exterior Durability	No	P-E	P-E	P-E	E	No	No	E	E	S	HP
Corrosion Protection	E	VG	G	E	VG	VG	E	VG	VG	E	E
Chemical Resistance	E	E	G	VG	VG	VG	E	G	VG	VG	VG
Application Properties	VG	G	G	VG	VG	E	E	G	E	VG	VG

P = Poor G = Good VG = Very Good E = Excellent S = Superior (AAMA 2604) HP = Highest Performance (AAMA 2605)

## Other Programs Available

TCI has developed a series of programs that support our customers and the successful completion of all projects.

The **TruXpress Rapid Response Small Batch Program** is TCI's response to our ever increasing need for speed, efficiency, and immediacy. Our manufacturing facility, that was created exclusively for small batch, custom match powder coat orders, includes multiple lines that can process batches as small as 55 pounds, allowing us to deliver the fastest turnaround times in the industry. Our investment in the TruXpress infrastructure ensures that we can provide rapid, high quality, and accurate service that consistently meets your lead times. The TruXpress service is available for all solid colors, super durables, AAMA 2603, 2604 and 2605 Colors, as well as most textures, wrinkles, peels and many metallic coatings.

Our vast inventory of super durable **RAL products** are available in convenient 25-pound boxes and are formulated in a low energy system that can be cured at temperatures as low as 350°F for a cost-effective solution with a rapid turnaround.

The **Color Chip Program** supplies you with 2"x3" chips coated in more than 300 of the most popular colors from our extensive portfolio of powder coatings, allowing you to freely explore your creativity. All chips are created according to our quality control process to ensure the powders are applied at the recommended film build and meet our quality appearance specifications before being placed into inventory and re-released for shipment. To further enhance the usability of the Color Chip Program, we offer a wall-mounted display system so you can quickly and easily access your chips.

Visit TCI's **Online Color Selector** to get an electronic view of more than 300 colors. Select the color, environment, and finish to find the perfect product for your needs. *\*Please note that colors in the selector might not be perfectly accurate due to variations of how colors are displayed on computer monitors.*

Contact TCI at (800) 533-9067 or visit [www.tcipowder.com](http://www.tcipowder.com) for more information on these programs.

# TCI Product Series

## 1000 Series Low Cure Systems

Formulated for heat sensitive substrates, these products were developed to cure at 250° F. Lower temperature are also possible. Powder can be applied with or without minimal substrate preheating. Products in this series will rapidly lose gloss and chalk on exterior exposure and are best suited for interior applications. These products feature excellent physical and chemical resistance properties. Typical uses include medium density fiberboard (MDF), fiber reinforced plastic (FRP), and sheet molding compounds (SMC). Each customer's substrate and application technology must be evaluated before ordering powder.

## 2000 Series Acrylic Systems

These products have a broad formulating range and can meet many decorative application requirements. Products in this series can have increased hardness, chemical resistance, overbake resistance, and weatherability when compared to standard systems. Products can be formulated for interior and exterior applications. Contact a TCI sales representative or chemist to determine suitability of this technology.

## 3000 Series High Temperature Systems

Formulated to provide coating stability in elevated temperature

## 6000 Series Epoxy/Polyester Hybrid Systems (cont'd)

good balance of physical properties and excellent application characteristics. Typical uses include automotive accessories, exercise equipment, power tools, and display racks.

## 7000 Series Epoxy Systems

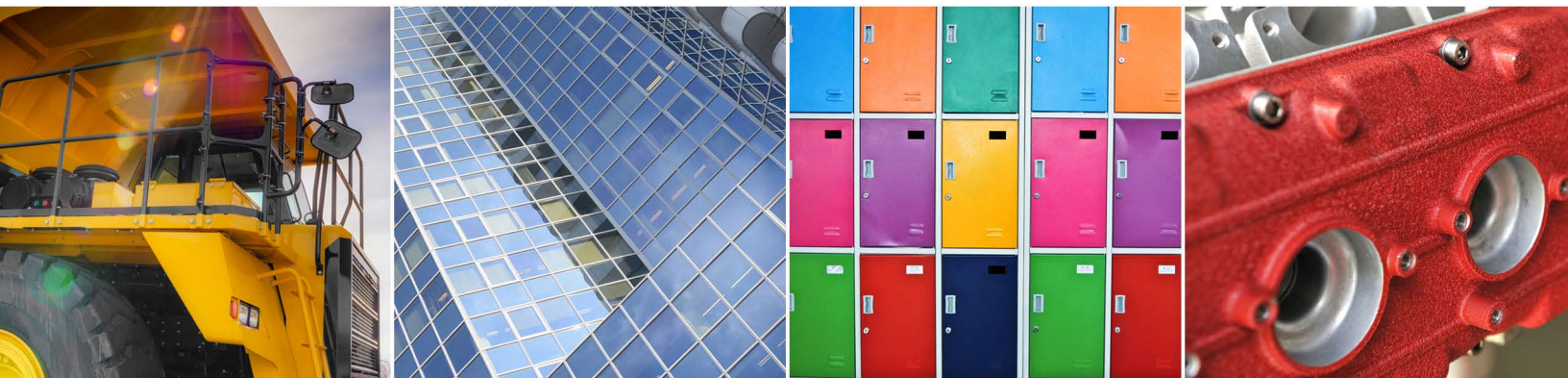
Products in this series are also best suited for interior applications as they can rapidly lose gloss and chalk when exposed to sunlight. Epoxy systems can be formulated to have excellent chemical resistance and physical properties. Typical uses include automotive underbody, corrosion resistant primers and material handling components.

## 8000 Series Urethane Systems

These products meet many decorative requirements for gloss, smoothness, color and weatherability. They are formulated for use in interior and exterior thin film applications. Most products in this series are not suitable for high film build. Typical applications include lighting fixtures, automotive trim, interior auto components, and interior/exterior furniture.

## 9000 Series TGIC Polyester Systems

The products have the broadest formulating range in color and gloss



applications, these products are suitable for different levels of continuous or intermittent temperature exposure. Contact a TCI chemist to initiate a product design for high temperature applications.

## 4000 Series Specialty Systems

With a broad formulating range, these products are utilized to meet unusually demanding requirements of decorative and functional applications. This series is recommended when conventional formulas will not meet a customer's performance specifications. Contact a TCI chemist to initiate a product design for demanding applications.

## 5000 Series Alternative Cure Polyester Systems

Formulated to meet many decorative requirements for gloss, smoothness, color and weatherability, these products can provide solutions where TGIC or urethane polyesters are not approved. Typical uses include interior and exterior furniture, sports equipment and machinery.

## 6000 Series Epoxy/Polyester Hybrid Systems

Although these products have a broad formulating range that can meet many decorative and functional application requirements, they can rapidly lose gloss and chalk when exposed to sunlight, making them best suited for interior applications. This series has a

and many will meet or exceed AAMA 2603 performance requirements. Typical uses include aluminum extrusions, playground equipment, agricultural equipment and machinery.

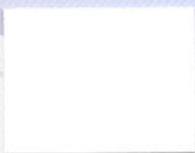
## 10000 Series Superior Exterior TGIC Polyester Systems

Products within this series are formulated to meet the requirements of AAMA 2604 specification. Products in this series are available in a medium gloss range and a wide selection of colors. Applications may include windows and doors, playground equipment, cladding components, park furniture, fences and railings, light fixtures and poles, stadium seating, and sports equipment.

## 11000 Series Highest Exterior Organic Systems

Formulated to meet the requirements of AAMA 2605 specification, products in this series have a medium gloss range and are available in many colors. Proper amorphous chromium phosphate or amorphous chromate pretreatment is critical to insure product performance. A TCI technical representative must audit each application system to ensure products will meet the 2605 specification.

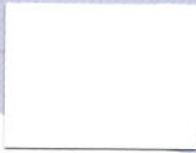
6000 Series Epoxy Polyester Hybrids



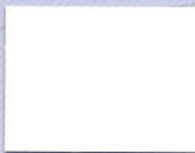
6920-9031  
Arctic White



6323-9037  
White Peel



6920-91067  
Universal White



6820-9189  
Cabinet White



6232-9044  
White Tex



6820-1065  
Antique White



6720-90335  
Oyster White



6720-9262  
Cabinet Beige



6820-1060  
Almond



6132-1056  
Almond Tex



6920-1229  
Piedmont Almond



6720-1062  
Champagne



6550-71817  
Lowes Gray 300 II



6820-7059  
Circuit Grey



6620-7530  
RAL 7040 Grey



6720-7050  
Mercury Grey



6132-7047  
Fog Grey



6820-1147  
Brite Yellow



6820-2004  
RAL 2004



6820-3063  
Fire Red



6820-3044  
Winchester Red



6820-5061  
Cobalt Blue



6032-9000  
Black Tex



6210-9866  
Northstar Black

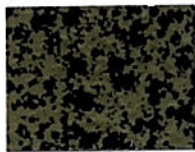


6420-9540  
45 Black

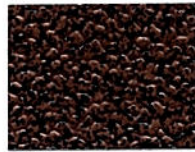


6920-9000  
Channel Black

7000 Series Epoxies



7334-0050  
Gold Vein



7334-0060  
Copper Vein



7334-0065  
Silver Vein



7010-9236  
JA6AXXJ Flat Black



7010-9000  
Flat Black



7027-91831  
Black Wrinkle Epoxy



7110-9000  
10 Black



7210-9000  
Trans Black



7420-90147  
40 Black Epoxy

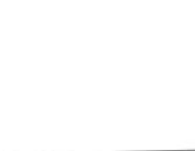


7830-9000  
Auto Chassis Black

8000 Series Urethanes



8810-9074  
Furniture White



8400-9053  
Satin White



8810-7097  
Tropic Grey



8300-7087  
61 Grey



8810-10577  
Goldenrod



8910-3067  
Blood Red



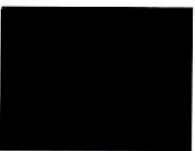
8000-9000  
Dash Black



8017-91612  
DF Black Wrinkle III



8200-9000  
Satin Black



8510-9000  
Universal Black



8702-9000  
JASAXXG



8910-9000  
Gloss Black

9000 Series TGIC Polyesters

9910-9035 Crystal White	9910-9897 Sky White II	9910-9741 Brite White	9610-9021 Pompano White	9313-9062 Poly White Peel	9910-1045 Pasta
9820-12266 Miracle Almond	9810-1048 Sandlewood	9810-1049 Mesa Tan	9810-7042 Elec. Grey/ASA 70	9510-70039 Super Grey 61	9610-7040 Storm Grey
9530-70200 HPC 61 Gray	9900-7111 Win Grey	9820-7146 Accuride Grey	9810-1070 Golden Yellow	9810-1268 Safety Yellow	9810-2113 Sonny Orange II
9840-2461R Safety Orange	9910-2352 October Orange	9810-3042 Ruby Red	9840-30200R Safety Red	9910-3921 Chili Pepper	9810-6046 Ivy Green
9910-5067 Azure Blue	9810-5413 Bahama Blue Poly	9910-5054 Ocean Blue	9910-8036 Dark Sienna	9611-01069 SD Statuary Bronze	9002-9324 JA6A Tex Polyester
9030-90922 SD Flat Black	9243-91713 LC Poly Black Peel	9350-91411 FC Matte Black	9510-91039 SD Mineral Black	9012-9000 Tex Black	9042-90137 LC Black Tex
9310-90160-G SD Black Polyester	9310-90278 Satin Black Polyester	9313-9000 Poly Black Peel	9330-90775 LC Poly Satin Black	9620-90786 N Black	9510-92337 Echo Black
9510-91410 Lava Black	9710-9000 Cargo Black	9740-90637 Super Slip Black II	9910-9845 SD Accuride Black II	9910-9000 Shuttle Black	9910-9845HF HF SD Accuride Black II

Clears

8910-0231 Anti-Graffiti 90 Clear	9310-01308 SD 40 Clear	9910-0000 90 Clear
9030-01311 SD 10 Clear	9710-01307 SD 70 Clear	9910-01289 SD 90 Clear

Fast Cures

9950-9897 FC Sky White II	6950-9000 FC Channel Black	9950-9000 FC Shuttle Black
9540-91709 FC Lava Black II	9550-9000 FC SD Lava Black	9950-90708 FC SD Accuride Black II

# Tru Colors

Illusions



9911-01869R  
Truillusion Silver



9911-01865R  
Truillusion Red



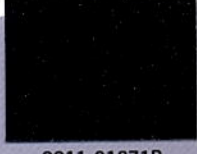
9911-01867R  
Truillusion Green



9911-01866R  
Truillusion Blue

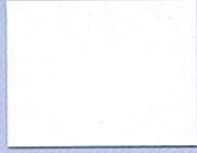


9911-01864R  
Truillusion Purple



9911-01871R  
Truillusion Black

Wrinkles



8027-92261  
Fog White Wrinkle



8027-72763  
Flint Grey Wrinkle



8027-30403  
Sunset Red Wrinkle



8027-51311  
Surf Blue Wrinkle

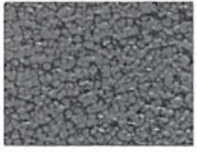


8027-81460  
Coffee Brown Wrinkle

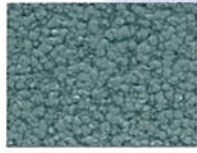


8027-92251  
CA Black Wrinkle

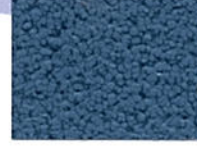
Hammers



9215-01910  
Silver Rock Hammer



9315-61636  
Mist Green Hammer



9215-51313  
Storm Blue Hammer



9315-01811  
Brown Hammer



9315-92132  
Dark Pewter Hammer

Peels



9413-92222  
Dixie Black Peel II

Erase



8800-92213  
Crystal Eraser White

# Primers



7030-10571-1  
Beige Primer II



7010-71529  
Sam Primer Gray



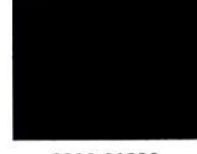
7520-70138  
Zinc Rich Primer



8510-7833  
HH Grey Primer



7760-3931  
LC Red Oxide Primer



8210-91232  
HH Black Primer

# Ag & Construction



9920-12085  
CNH Power Tan\*



9920-72188  
CNH CE Gray\*



9910-10503  
SD Cat Yellow



9840-60728  
FC SD JD AG Green



9920-51087  
CNH NH Blue\*



9920-72190  
CNH Dark Gray\*



9420-91835  
CNH Black\*



9350-91614  
FC SD JD Black



9210-90663  
SD Cat Black

\*Has formal approval

# AAMA



10310-91095  
AAMA 2604 Bone White

\*For a full selection of TCI's architectural powder coatings, please see our TruDurance™ Architectural Color Card.

# Federal Standards



7820-71737  
Epoxy Primer Mil  
Spec 53022



8010-10828  
Fed Std 33446



8010-60063  
Fed Std 34094 Green



8010-91335  
Fed Std 37038

# Metallics



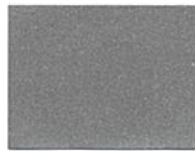
9811-0110  
Wheel Silver



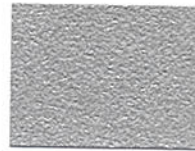
9911-01007  
Chrome II



9911-01304  
Mirror Silvadillo



9611-01333  
Stainless Steel 2.5



8212-01185  
Stainless Steel Tex III



9711-0259  
Bright Argent Metallic



8112-0889  
Kessler Silver



9811-0540  
Stardust Silver II



9511-01405  
Anodized Aluminum



9511-01413  
New Alpine Silver



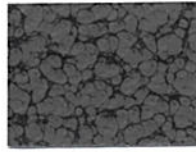
9114-01411  
Poly Gold Vein



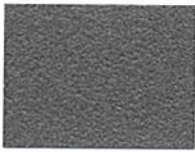
9114-0346  
Poly Silver Vein



9114-0608  
Weatherveine



9415-71531  
Sam Grey Hammer



9012-0050  
Silver Tex



9211-01410  
SD Oil Rubbed Bronze



9016-80072M  
Pompeian Gold II



9411-01409  
Quaker-40 Bronze



9811-01408  
SD Starlight Black



9411-01414  
Satin Nickel



9911-01406  
Black Chrome



9711-01407  
SD Harvest Gold



9921-01023  
SD Coppertop



10511-0997  
AAMA 2604 Bronze

# Product Formulation

## First Number = Resin Type

9801-1000 (example)

- |                      |                |
|----------------------|----------------|
| 1 = Low Cure         | 7 = Epoxy      |
| 2 = Acrylic          | 8 = Urethane   |
| 3 = High Temperature | 9 = TGIC       |
| 4 = Specialty        | 10 = AAMA 2604 |
| 5 = Alt. Cure        | 11 = AAMA 2605 |
| 6 = Hybrids          |                |

## Second Number = 60° Gloss Reading

9801-1000 (example)

- |           |           |
|-----------|-----------|
| 0 = 0-9   | 5 = 50-59 |
| 1 = 10-19 | 6 = 60-69 |
| 2 = 20-29 | 7 = 70-79 |
| 3 = 30-39 | 8 = 80-89 |
| 4 = 40-49 | 9 = 90+   |

## Third Number = Cure Response

9801-1000 (example) Time at metal temp for full cure

- |                      |                         |
|----------------------|-------------------------|
| 0 = 12 min. @ 400° F | 5 = 10 min. @ 300° F    |
| 1 = 10 min. @ 400° F | 6 = 10 min. @ 275° F    |
| 2 = 10 min. @ 375° F | 7 = 10 min. @ 250° F    |
| 3 = 10 min. @ 350° F | 8 = Fast Cure - See TDS |
| 4 = 10 min. @ 325° F | for recommended cure    |

## Fourth Number = Surface Appearance

9801-1000 (example)

- |                 |                 |
|-----------------|-----------------|
| 0 = Smooth      | 4 = Vein        |
| 1 = Metallic    | 5 = Hammertone  |
| 2 = Sand        | 6 = Multi-Color |
| 3 = Orange Peel | 7 = Wrinkle     |

## Last Series Corresponds to RAL Color System

9801-1000 (example)

- |                           |                        |
|---------------------------|------------------------|
| 0000 = Clears & Metallics | 5000 = Blues           |
| 1000 = Yellows & Beiges   | 6000 = Greens          |
| 2000 = Oranges            | 7000 = Grays           |
| 3000 = Reds               | 8000 = Browns          |
| 4000 = Violets            | 9000 = Blacks & Whites |

## Product Coding Notes for Metallics

10801/1000 = 10000 Series Metallic  
\*CLEARCOAT Required

108010/1000 = 10000 Series Metallic  
\* NO CLEARCOAT Required